

Jeopardy

Terms 1

Terms 2

Video 1

Video 2

\$100

\$100

\$100

\$100

\$200

\$200

\$200

\$200

\$300

\$300

\$300

\$300

\$400

\$400

\$400

\$400

Final Jeopardy

1 - \$100

- Shakespeare wrote most of *Romeo and Juliet* in what...?
- Blank verse



1 - \$200

- These types of characters do not change their minds, opinions, or characteristics.
- Static characters



1 - \$300

- With this type of irony, the audience knows something to be true that the character does not...

- Dramatic irony



1 - \$400

- In a tragedy, what are the two main reasons a character suffers a great misfortune?
- 1. Character flaws 2. Fate



2 - \$100

- This term occurs when characters say something in an undertone...

- Aside



2 - \$200

- “Ah, my mistresses, which of you all / will now deny to dance” is an example of what?
- Direct address



2 - \$300

- A _____ allows the audience to gain insight into a character's thoughts.
- Soliloquy



2 - \$400

- Situation irony is when...
- An event directly contradicts the expectations of the character or the audience



3 - \$100

- What “rank” would people who wore purple colored clothing be?
- Wealthy; noble; rich



3 - \$200

- Since theaters in Shakespeare's time did not have modern technologies, what did they use to make up for this lack?
- Elaborate costumes



3 - \$300

- What were three elements that made a play popular or successful?
- Romance, comedy, violence (bloodshed)



3 - \$400

- Why does one of the actors argue Shakespeare purposefully wants us to know the ending before it comes?
- The audience grows more invested or attached to the characters; we want to see the succeed and beat the odds.



4 - \$100

- Shakespeare's plays were held when?
- During the afternoon (best lighting)



4 - \$200

- What stopped the city officials from closing the theaters entirely?
- The Queen (she loved going to see plays)



4 - \$300

- What keeps Shakespeare alive today?
- His plays are reinterpreted and performed in creative and unique ways

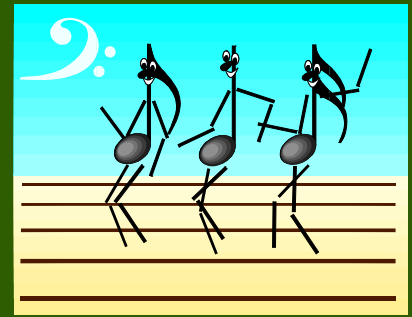


4 - \$400

- What rights did women lack during Elizabethan England?
- Couldn't vote or own property or act in a play; #1 job was to get married (usually arranged marriages).



Final Jeopardy



- What were 3 reasons WHY city officials disliked plays?
 - 1. Spread the plague (disease)
 - 2. People left work to see the play
 - 3. Brought unsavory people/created bad behavior

